

Double Materiality: Theory and Practice

1-day intensive workshop



Location:
Beechenhill Farm, Ilam, Derbyshire

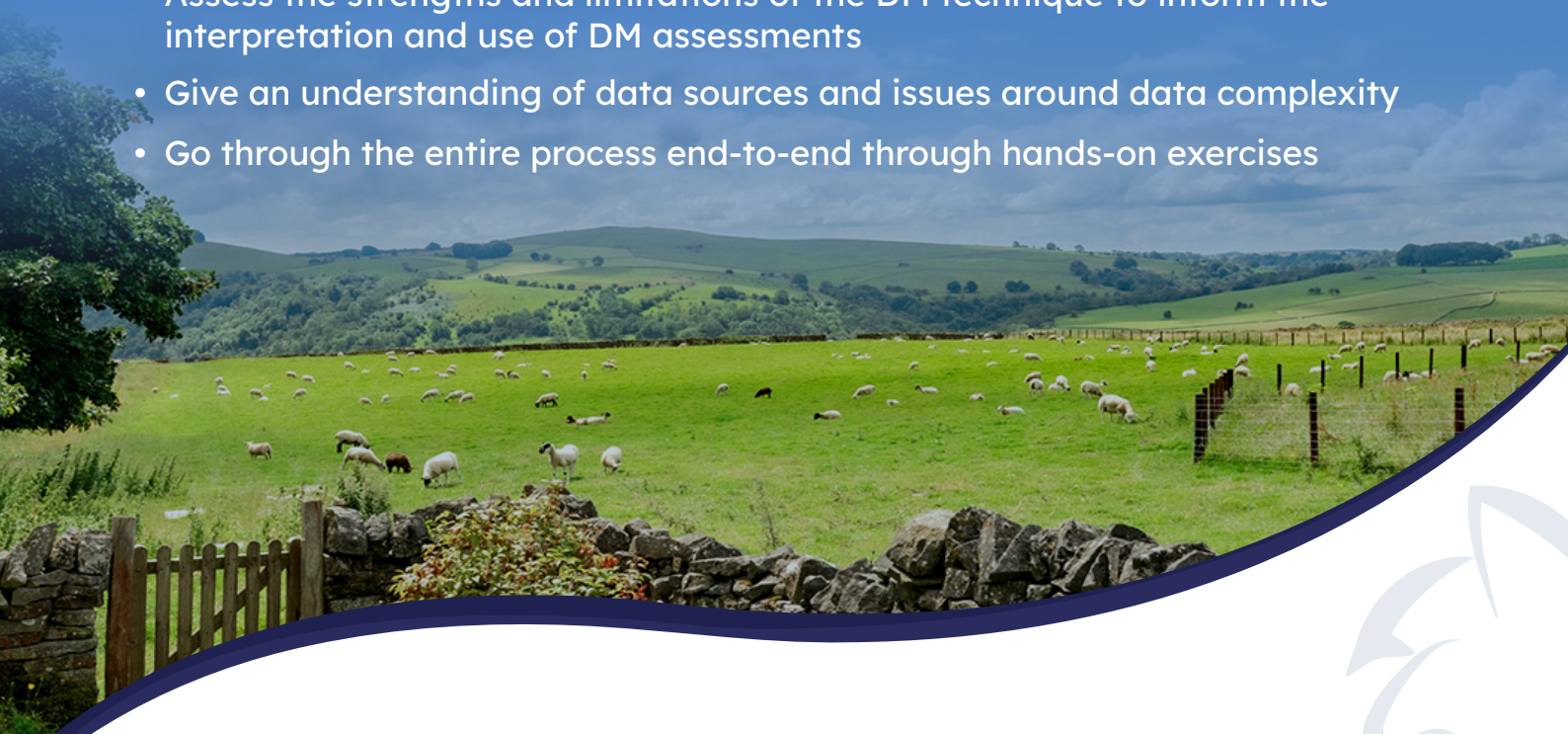


Green Knight
SUSTAINABILITY CONSULTING LTD

This workshop gives delegates a sound foundation in the practice and application of Double Materiality (DM) assessments. Through hands-on engagement and illustrated with a wealth of real-world examples, attendees will gain a thorough understanding of the technique to inform their creation and use in the workplace.

The workshop will:

- Introduce delegates to a range of risk models and the changing nature of risk priorities
- Assess the strengths and limitations of the DM technique to inform the interpretation and use of DM assessments
- Give an understanding of data sources and issues around data complexity
- Go through the entire process end-to-end through hands-on exercises



Who should attend?

- Established sustainability professionals with no previous training on DMs
- Early-career sustainability practitioners
- Procurement and other professionals using DM assessments as an evaluation tool
- Managers with responsibility for risk management evaluation
- Academic researchers using or evaluating DM or other model data

Suggested prior experience:

- An awareness of the nature of Double Materiality assessments
- Some exposure to risk assessment in your day-to-day work
- A background in sustainability as a practitioner or qualification in a STEM subject to graduate level or equivalent

An ISEP Certificate of Attendance is provided for all delegates who complete the workshop.

Your host



Dr Gavin Milligan

CChem MRSC CEnv MISP FIFST FRSA

Gavin has over 30 years' corporate experience up to Board level and 8 years as an independent consultant, supporting clients to develop and deliver sustainability programmes aligned with commercial strategy. His expertise spans systems thinking, resource efficiency, sustainability strategy, and global supply chains. He is Chair of the Sustainability Steering Group at the Institute of Food Science and Technology,

where he is also a Fellow, and lectures on supply chain accounting at a Triple Crown Accredited management school. Gavin has advised clients across many sectors – aerospace, agri-food, construction, energy, healthcare, packaging, and retail, providing both strategic guidance and technical support.

The venue

A stunning rural setting – Beechenhill Farm, in the Peak District National Park.

Nestled in the Peak District hills, Beechenhill is a beautifully restored organic farm, run by artist Sue Prince and her husband Terry. The traditional stone buildings have been thoughtfully converted into three self-catering cottages and a characterful workshop venue – the Haybarn. Once a working organic farm, Beechenhill is now focused on rewilding and offering high quality hospitality.

[Follow this link for full venue details](#)



The workshop will cover:

- risk and opportunity
- stakeholders
- organisational priorities
- data and benchmarking
- the materiality assessment process

Upcoming dates

Our next courses run 28th April and 12th May 2026, with more to come later in the year. Please contact us to keep informed: training@greenknight.consulting

Cost

£500 + VAT per delegate, including lunch and refreshments (applicable for all 2026 dates).

“

Client Testimonials

“100% recommended, massive learning accompanied with great discussions and, of course, fun!”

“It has been a turning point for my career development.”

“Unique, thorough and intricate!”

“Inspiring and informative.”

“Brilliant.”

“Incredibly insightful and thought-provoking.”

“Excellent and engaging, incredibly valuable.”

“Solid knowledge and very rich practical examples.”

“Outstanding.”

“Made the complex so clear.”



”



To book your place or find out more, contact us at:
training@greenknight.consulting



greenknight.consulting



Green Knight

SUSTAINABILITY CONSULTING LTD